

FIRST PRESBYTERIAN
CHURCH

LOGOS Leadership

Director
Kathy Price
736-6297
pakprice@earthlink.net

Rev. Phil Price
First Presbyterian Ch.
733-7023
revphil@twinfallsfpc.org

Rev. Deb Seles
Ascension Episcopal Ch.
733-1248
dseles@idahodiocese.org

Ascension Contact
Carrie Edlund
944-4616
cnelund@uams.edu

LOGOS Handbook

2010 - 2011

Welcome!

My sister or brother in Christ,

If you have picked up this handbook then you are about to jump into one of the most awesome experiences you have ever had. Whether you are looking to include one of your children or you are seeking to answer God's call in your life to join in on the fun of Wednesday evenings at FPC you are about to see what faith formation is all about!

LOGOS is so much more than a program for children and youth. While that is the reason we have begun this ministry within our congregation and community, everyone who participates on Wednesday evening sees their faith grow. That's because all of us, whether the youngest child in Bible class or the oldest member of a kitchen crew spend the afternoon and evening intentionally remembering that we are first and foremost a beloved child of God and therefore should treat every other child of God with the love of God. It is through this intentional relationship that LOGOS becomes so much more than only a program for children and youth.

Instead, by building relationships your child will come to know loving and trusting adults with whom they can go to in times of need as they mature. As your child goes from

being a preschooler to a teenager, over night, she will be able to lean on a whole family of adults who care for her. And when your soon to be teenager needs the prayer and concern of others he will have the prayers of people who know not only his name but have shared part of their life with him.

By building relationships as a called volunteer you will come to a fuller understanding of what it means to be part of the Body of Christ. As you give of your time and talent for the benefit of our youngest members you will grow in prayer by relying on God week in and week out. As you stumble you will find others who will reach out and catch you, thus easing your journey and strengthening bonds formed on Sunday mornings.

Relationships are what the church is all about: our relationship with Jesus Christ; our relationship with our peers; our relationship with those who are younger than we are. And it is these relationships that will carry us forward. So join with your brothers and sisters of faith on Wednesday evenings at LOGOS and see just how far our relationships with God and our siblings in faith will take us!

Your sibling in Christ,
Rev. Phil Price

Welcome to our friends from Ascension Episcopal Church who will be joining our program this year!

LOGOS... Greek for "the Word", John 1:1

**Treat every person as a
child of God.**

This is our ONE RULE of LOGOS and developing and nurturing Christian relationships is at the heart of the LOGOS weekly ministry. Through scripture, we come to know that to

God, relationships are everything. This is true for our personal relationship with God and for the relationships we have with one another. Our relationships with one another are made new because of our relationship with God. Learning to do this takes time and practice and the LOGOS weekly ministry provides both in a safe environment every week.



The Four Parts of LOGOS



the
istry
here
our

Bible Study: Bible study is critical to LOGOS weekly ministry because it is that we tell common

Caption describing picture or graphic.

story and discover who we are. It is where we learn about the stories of God's relationship with people and their relationships with one another.

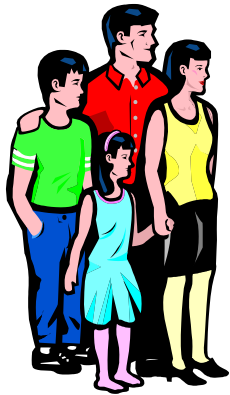
Worship Skills: Worship is the essential element of nurture in relationships and community. The Worship Skills portion of the weekly ministry provides time to learn about worship and to prepare for leadership in regular congregational worship. The

LOGOS Ministry is committed to the preparation of youth and children to provide worship leadership for the congregation on a regular basis.

Recreation Play: Part of what it means to be created in the image of God is having the capacity to give and receive personal sharing. One of the times in which self-revelation takes place is when we play together. The challenge in Recreation Play is learning how to treat each other as children of God even at the most difficult moments of self-revelation. So, we play for theo-

Parent Participation

We
lieve



be-

ask that at least one parent of a child participating make a commitment to serve in some capacity. There are many areas of service for parents taking into account schedules and time available.

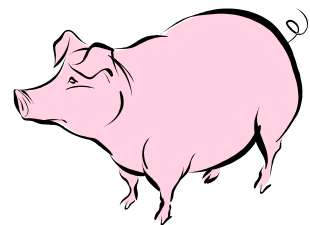
Areas in which parents can serve in LOGOS include:

- Family time ministry: cook team member, dishwasher, dining room set-up, dining room clean-up, washing table linens, food prep, food purchasing, menu planner
- Playtime Ministry: lead an elective course in a skill/hobby you enjoy
- Music/Worship Ministry: leader, accompanist, Sun-

strongly in the value of parent participation in this ministry and

- Bible Study Ministry: teach-

Mission



We
will

have four mission projects this year.

1. We will have our annual Souper Bowl canned food drive on February 2.

2. One evening this year we will make cards for the shut-in members of our congregation.
3. This year we will once again participate in Crop Walk and ask all families to join us for this fall event.
4. Our project over the whole year is to collect enough spare change to purchase pigs through Heifer Project

International. Our goal is \$120. There will be piggy banks in each classroom to collect the change and soon you will see our "Pigs on Parade" in the downstairs educational wing hall-



Caption describing picture or graphic.

Schedule for Worship Leadership



The children and youth will be participating in worship leadership at both First Pres. and Ascension throughout the fall and spring during Sunday worship services, and other special services throughout the year. Notices and reminders will be sent to you to help enable your child's participation. We ask that you make every effort to have your child there, on the Sundays they are helping to lead worship, arrangements are made with the intention of every child being there.



Fees & Guests

Fees, for all 20 weeks of LOGOS, include cost of all meals, a Bible study book, Mission Partnership to The LOGOS Ministry, craft supplies, worship skills supplies and administrative costs. The fee works out to less than \$5 a week.

Preschool:	\$20/year
First Child:	\$ 90.00
2 Children:	\$150.00
3 Children:	\$210.00
4 Children:	\$270.00

Family members and staff are welcome to join us for dinner. The cost per person is \$60 for the year.

Fee schedule:

Half of fee is due at registration. Remainder of fee due November 1. Payment plans are also an option

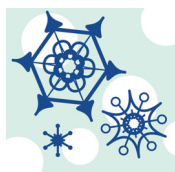
*Scholarships are available, please contact one of the directors for information.

GUESTS:

Participants are welcome to bring a guest by making a reservation by 5:00 p.m. the Sunday before. The cost for all guests will be \$3.00. After a guest visits the 2nd time they will be asked to join LOGOS to continue attending. Please contact Kathy Price for reservations (736-6297)

Cancellation/Snow Policy

If **either** Twin Falls or Kimberly School Districts are closed or close early on a LOGOS night due to weather, LOGOS will be cancelled and will not be made up at the end of the semester.



Child Care

Child care is provided for children who are too young to participate in LOGOS. Childcare will be provided in the church nursery for those whose parents are serving at LOGOS. Please notify the Director if you will be needing this service.



Calendar



Caption describing picture or graphic. We Are Family (World Communion) October 13 Mr. Po-

tato Head
 October 20 School Spirit
 October 27 Halloween
 November 3 Construction Night
 November 10 Patriotic Night



September 29 Take Off! (Rockets) October 6



Weekly Schedule

Time	Grade K-2	Grades 3-5	Preschool	Youth
4:00 – 4:45	Recreation	Recreation		
4:45-5:30	Bible Study	Worship Skills	Bible Study	Recreation
5:30-6:15	Worship Skills	Bible Study	Worship Skills	Worship Skills
6:15-7:00	Dinner	Dinner	(Dinner)	Dinner
7:00-7:45				Bible Study



LOGOS Experience



Each year our

church tries to send people for training at a LOGOS Experience. An Experience includes 2 days of learning, sharing, and relationship

building with other church leaders and with a team of LOGOS Leaders. Attendees at a LOGOS Experience will not only gain an understanding of the foundations of the ministry and learn about how to get their own children's weekly ministry going; they will actually experience LOGOS-in-action! LOGOS Ex-

perience is great for churches considering a new ministry, or for those who want to re-energize their church's commitment to LOGOS. If you are interested in attending this event please let the



Caption describing picture or graphic.

Discipline and the Golden Rule of LOGOS

Good Rules for Good Times!

Our first and most important rule for being together at LOGOS is **that we are to treat every person as a child of God – no one may treat others as if they do not matter.** We will work to exhibit respect and courtesy and kindness at all times. In order to help us understand more about what this means, here are four simple, but important rules for **all** students and **all** staff to remember.

1. WE TAKE CARE OF EACH OTHER.

This means we don't hit, kick, laugh at, or knowingly hurt anyone. We appreciate the hard work and efforts of others.

2. WE TAKE CARE OF OUR THINGS.

This means we are careful of our own belongings as well as

the belongings of others. We don't knowingly break things or destroy the property of other people or the church. We clean up after ourselves. We repair or replace things we break.

3. WE KEEP OUR SCHEDULE.

This means we are on time to our classes and that we remain inside the building, unless we are with a leader. We call if we are going to be late or if we are going to be absent from LOGOS or from assigned Sunday worship leadership responsibilities. We use the time in-between classes for the restroom.

4. WE HAVE GREAT FUN...

at no one's expense! We practice good sportsmanship. We encourage, support and cheer for each other whenever we play, study, sing, or share a meal!

5. WE COME PREPARED TO PARTICIPATE.

This is not a time for doing homework, leaving early for other activities, or dropping out of cer-

tain activities or classes.

6. ALL I NEED IS ME! Cell phones (for calls or texting), IPODS, Gameboys, or other toys are not appropriate during LOGOS as they divert our attention and keep us from participating with each other.

The LOGOS Comforter

Our LOGOS Ministry provides a "Comforter" each week during the time we are meeting. The role of the comforter is to spend time with children who need a quiet, less-stressful environment to help them gain control of themselves. Comforters provide a calming presence and help students reenter the classroom or group. Please feel free to call our LOGOS Directors if you have any questions.



What happens if rules are broken?

We seek to be in partnership with all families whenever and wherever appropriate for the well-being of children who participate in LOGOS. Questions about discipline should be referred to the LOGOS Directors. Individual circumstances may, at times, require that alternative procedures be followed. Whenever special circumstances exist that may affect a child's participation in LOGOS, parent and LOGOS staff shall collaboratively consult in order to provide the best possible LOGOS experience for the whole LOGOS family, and strive to work together to resolve and reconcile any conflict.

Disciplinary problems will be dealt with quickly and creatively, as they are detrimental to a student, to the progress of the entire class, and sometimes to the safety and well-being of others.

In general, our policy will be to:

1. At the first incident, teachers or leaders will issue a warning to the student.
2. At a second incident, the student will be excused for a time-out with the Comforter.
3. At a third incident, the student will be required to meet with the LOGOS Ministry Director.
4. If inappropriate behavior continues, the LOGOS Ministry Director will consult with the pastor to determine how to involve the parents or guardians in creating a solution. If problems require an expertise outside the skills and abilities of the LOGOS Ministry staff, a current list of agencies in our community that assist families with special circumstances will be provided to parents.
5. The church staff and the LOGOS Ministry staff will offer on-going support and encouragement to any family whose student is unable to participate in LOGOS because of disciplinary issues.



Organization

First Presbyterian Church

Primary Business Address

Your Address Line 2

Your Address Line 3

Your Address Line 4

Phone: 555-555-5555

Fax: 555-555-5555

E-mail: someone@example.com

Your business tag line here.

This would be a good place to insert a short paragraph about your organization. It might include the purpose of the organization, its mission, founding date, and a brief history. You could also include a brief list of the types of products, services, or programs your organization offers, the geographic area covered (for example, western U.S. or European markets), and a profile of the types of customers or members served.

It would also be useful to include a contact name for readers who want more information about the organization.



Back Page Story Headline

This story can fit 175-225 words.

If your newsletter is folded and mailed, this story will appear on the back. So, it's a good idea to make it easy to read at a glance.

A question and answer session is a good way to quickly capture the attention of readers. You can either compile questions that you've received since the last edition or you can summarize some generic questions that are frequently asked about your organization.

A listing of names and titles of managers in your organization is a good way to give your newsletter a personal touch. If your organization is small, you may want to list the names of all employees.

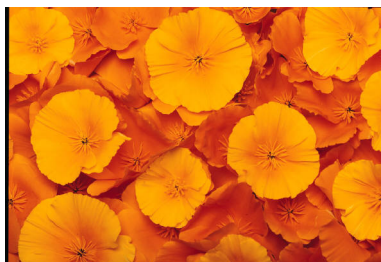
If you have any prices of standard products or services, you can include

a listing of those here. You may want to refer your readers to any other forms of communication that you've created for your organization.

You can also use this space to remind readers to mark their calendars for a regular event, such as a breakfast meeting for vendors every third Tuesday of the month, or a biannual

charity auction.

If space is available, this is a good place to insert a clip art image or some other graphic.



Caption describing picture or graphic.